

Product summary:

Wrapped tongue and groove panels.

Detailed description:

Wrapped tongue-and-groove panels with a tough, smooth and tactile surface, containing no MDF imperfections. The re-coatable vinyl surface requires only a topcoat of paint to achieve a decorative finish. The wrapped surface restricts moisture from passing through the panel so the risk of condensation is greatly reduced. It is also suitable for high traffic areas.

Features and benefits:

- Defect-free finish with no MDF fibre show.
- 50% less paint than primed MDF.
- Foil face acts as moisture barrier.
- Quick to install and finish.
- Available in smooth or woodgrain texture.

Applications:

For interior use, including wall and ceiling panelling.
Manufactured in accordance with EN 622-5.

Product guidance - As Standard:

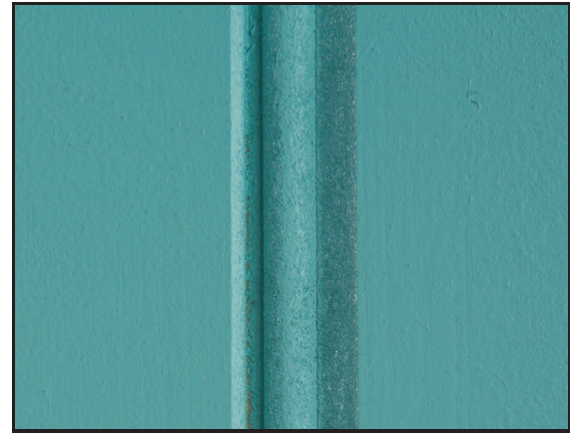
Technical characteristics:

- Foil type: Polyolefin.
- Laminate thickness: 0.15–0.5 mm.
- Core property: MR–MDF.
- Average density: 700 kg/m³ (±10%) (12 mm).
- Formaldehyde release: Class E1.
- Moisture content to EN 322: 5–9%.
- EUTR status: Compliant, sourced within the EU.

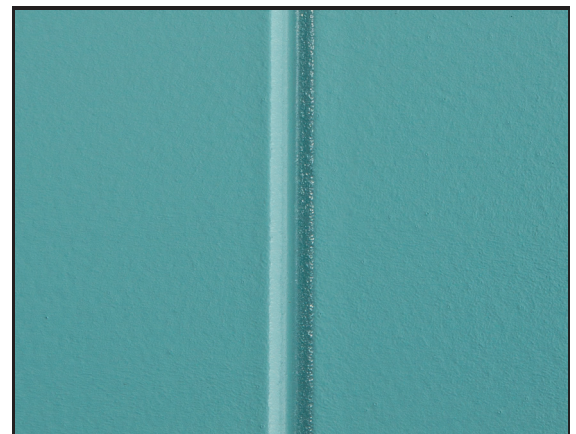
Product specification:

Manufacturer:

- Name: Morland
- Web: www.morland-uk.com
- Email: info@morland-uk.com
- Tel: +44 (0)1938 551980
- Fax: +44 (0)1938 554174
- Address: Morland, Unit 2, Buttington Cross Enterprise Park, Welshpool, Powys SY21 8SL



When painted, primed MDF T&G soaks up liquid, lifting the materials fibres, creating unsightly, rough painted finishes.



Morland's paint-ready tongue and groove wrapping produces a moisture barrier, preventing liquid ingress when painted, providing a perfectly smooth surface for a beautiful lustrous finish.

Product reference:

Morland Wrapped Tongue & Groove Panels

Size:

2440 x 600 mm- Visible dimensions 580 mm.
3050 x 600 mm- Visible dimensions 580 mm.

Core thickness:

9mm
12mm